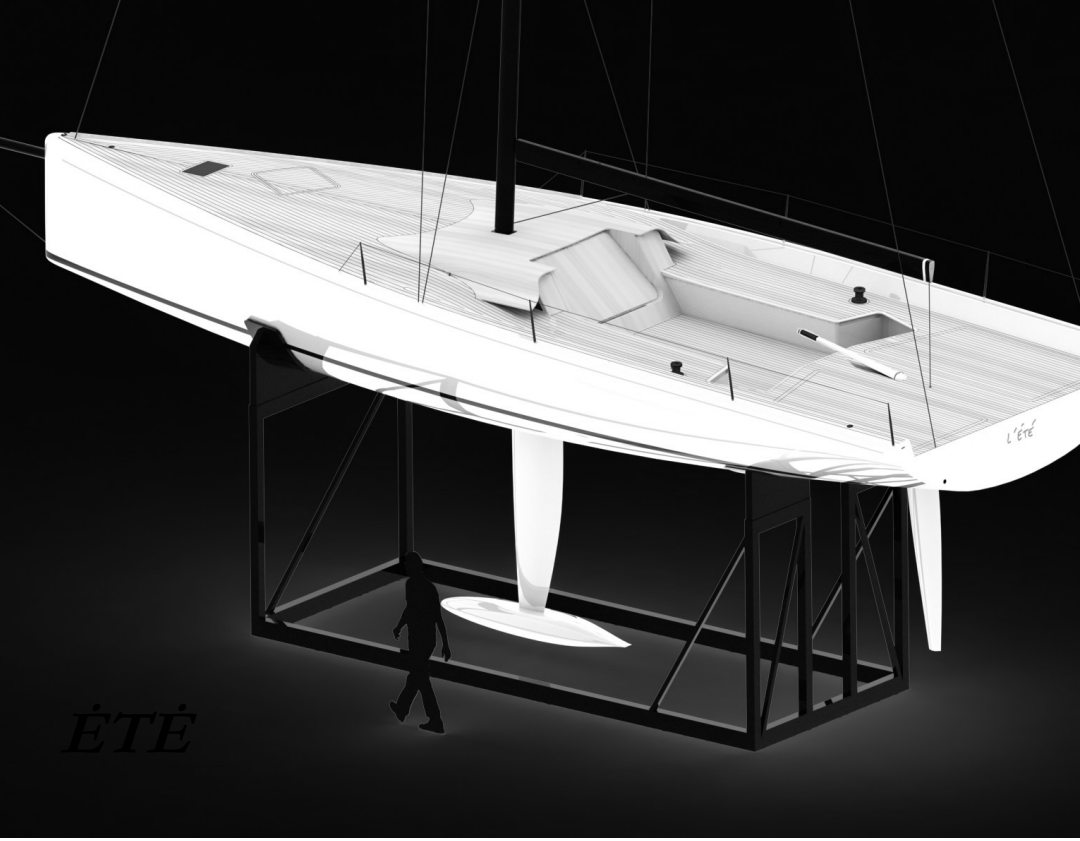




**L'ÉTÉ  
MEDITERRANEAN SAILING  
SELECTION**

OPEN RECORDS, RACES AND DESTINATION GUIDE





*L'ÉTÉ*

## ▶ **L'ÉTÉ** A PEDIGREE

Behind the design of l'ÉTÉ is the thinking that led to winning the Louis Vuitton Cup with Ineos Britannia. And the same thinking that led Elida, our 15 meter design, in beating JV, Farr and Reichel Pugh designs.





## ***MEDITERRANEAN EXCELLENCE***

To imagine a new circuit is to  
imagine a new world.

This selection is created with a  
vision for progress that  
simultaneously combine our  
mediterranean culture, advanced  
technology, nature, and the all-  
important spirit of freedom.

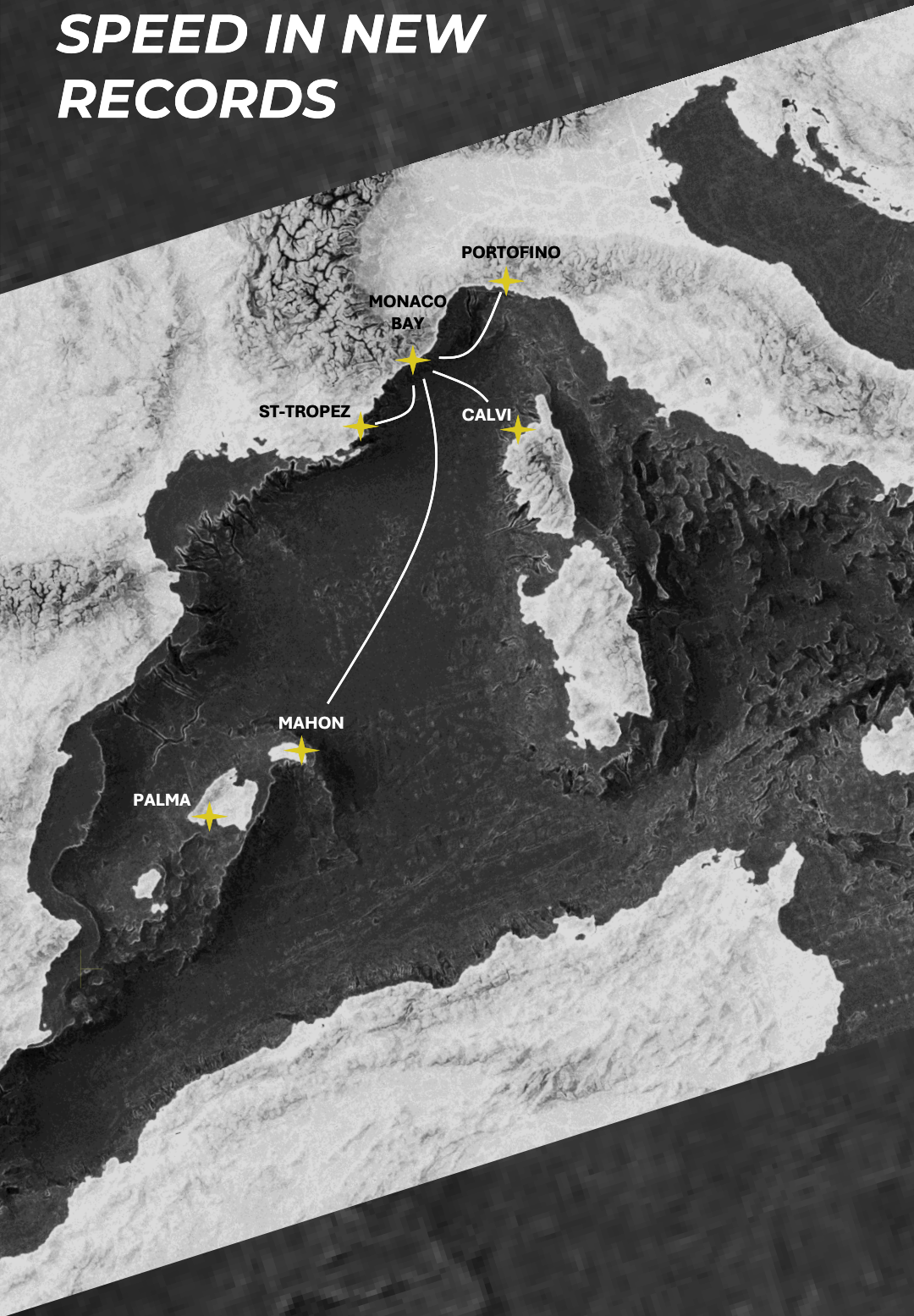
## ***NOT JUST ANOTHER RACING CIRCUIT***

it became clear that this *Selection* was not just about creating another One Design circuit.

Typical racing circuits miss so much : the spirit of exploration, the thrill of records, and the legendary long-standing events. They also increasingly lock owners with designs whose relevance quickly fades.

---

# 1/ TEST YOUR SPEED IN NEW RECORDS





# **AGAINST THE CLOCK**

*THE NEW MEDITERRANEAN RECORDS  
NETWORK FOR OUR DESIGNS, CLASSIC  
YACHTS AND FOILING YACHTS*

**1/ St-Tropez To Monaco Bay or back**

45 nautical miles – 4 to 7 hours

**2/ Calvi To Monaco Bay or back**

100 nautical miles – 9 to 15 hours

**3/ Portofino To Monaco Bay or back**

100 nautical miles – 9 to 15 hours

**4/ Mahon To Monaco Bay or back**

260 nautical miles – 20 to 35 hours

**NEW**



# ***SCHEDULE***

**From May 2025** – open to compete at your own time

**From May 2026** – organization of events

1/ **Digital**: fast, easy, accessible, transparent

2/ Brilliant way to turn holidays into serious sailing, **when you want and as you want**

3/ Combined community of more than **500+ sailors** in Europe all passionate about speed and technology

*Find details and register interest at :*

**[www.thomastison.com/records](http://www.thomastison.com/records)**



## ▶ **L'ÉTÉ** OFFSHORE CAPABILITY

Exceeding ISO Category A requirements, the design of l'ÉTÉ redefines the daysailer with capabilities that simplify and make journeys to and from Corsica and the Balearic Islands possible. Designed for stability and comfort, her extended length and STIX index makes l'ÉTÉ a fast and trustful companion to life.





# 2/ COMPETE IN SPECTACULAR RACES

GIRAGLIA



VOILES DE  
ST-TROPEZ



PALMA  
COPA DEL REY





# **THE POTENTIAL TO JOIN THE MOST MODERN ADVANCED AND CLASSIC YACHTS**

## **1/ Loro Piana Giraglia**

*IRC and ORC – Early June*

## **2/ Copa del Rey MAPFRE**

*ORC event – End of July*

## **3/ Voiles de St Tropez**

*End of September*

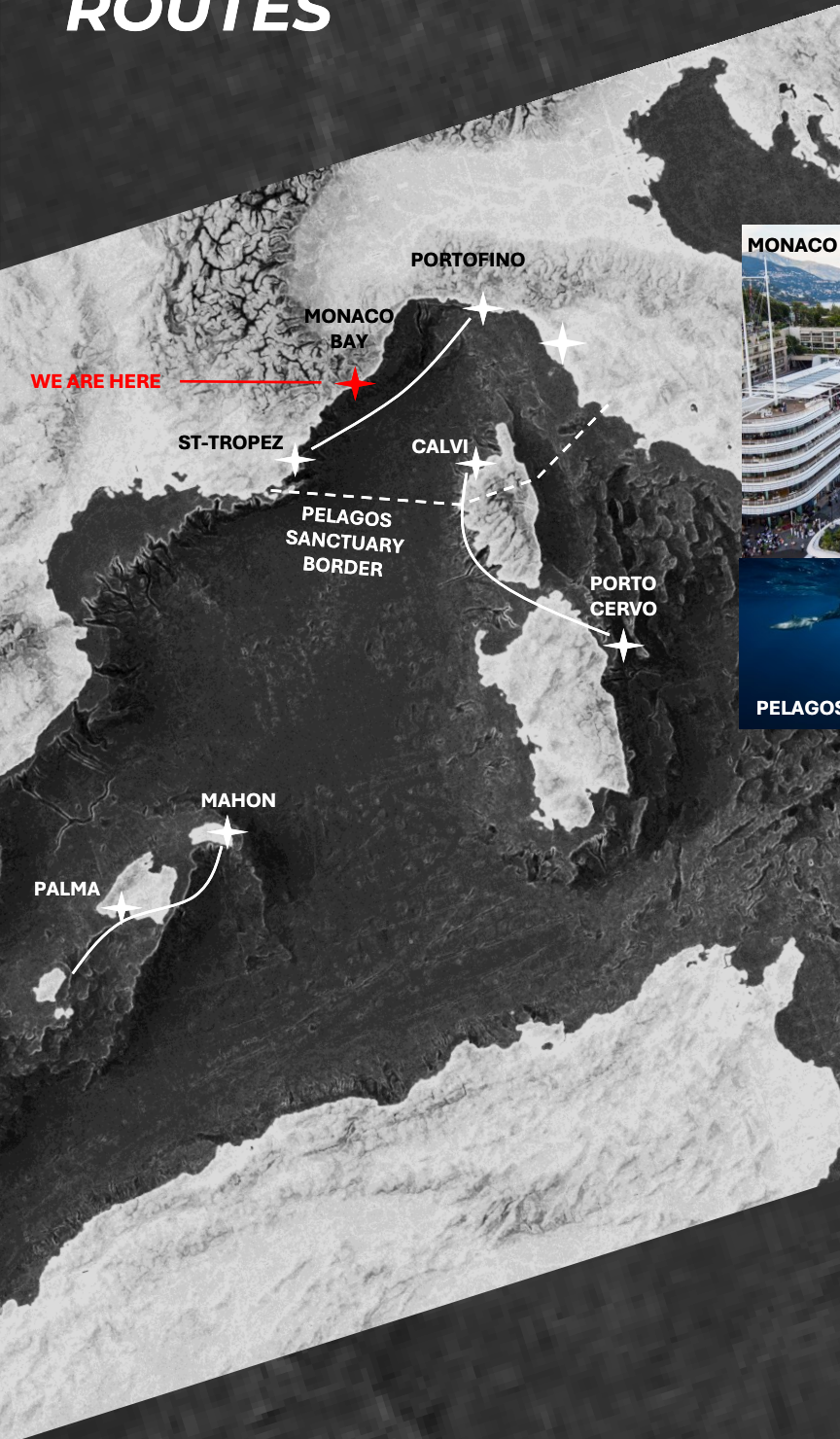
- ▶ Built to exacting standards, l'ÉTÉ can race in IRC or ORC events. L'ÉTÉ is the best way to join competitive races with the most modern yachts, competition with classic yachts and the events that surround them.



► **L'ÉTÉ**  
TO EXPLORE

Unique among the daysailers, is the ability for l'ÉTÉ to travel long distances and explore. She is designed for those who love the beauty of contrasts and prefer to spend just one night or two at sea and spending the next days in a hotel and eating out. Thus, simplifying preparation, logistics and for more spontaneity.

# 3/ EXPLORATION ROUTES



RIVIERA ROUTE



MONACO YACHT CLUB



PELAGOS SANCTUARY



CORSICA ROUTE



BALEARIC ROUTE



Detailed guides will be prepared for each exploration route to facilitate exploration.

# **EXAMPLE 10 DAYS EXPLORATIONS**

## **CORSICA & SARDINIA ROUTE**

Start - Calvi

20 nautical miles

*Girolata (sleep on board)*

35 nautical miles

*Ajaccio*

25 nautical miles

*Propriano*

20 nautical miles

*Roccapina (sleep on board)*

15 nautical miles

*Bonifacio*

15 nautical miles

*Porto Pollo (sleep on board)*

15 nautical miles

*Porto Palau and explore rea*

10 nautical miles

End - Port Cervo

## **ITALIAN & FRENCH RIVIERA**

Start - St Tropez

12 nautical miles

*Port du Poussai (sleep on board)*

10 nautical miles

*Cannes and Iles de Lerins*

20 nautical miles

*Villefranche-sur-mer*

22 nautical miles

*San Remo*

25 nautical miles

*La gallinara / Andora*

25 nautical miles

*Spiaggia del Santu Cristu (sleep on board)*

25 nautical miles

End - Portofino



▶ **L'ÉTÉ, A SEVERE  
DOSE OF CULTURE**

To experience the Mediterranean Sea is to be excited by the vineyards of Provence, the fast cars of Italy and the authentic food of Corsica.

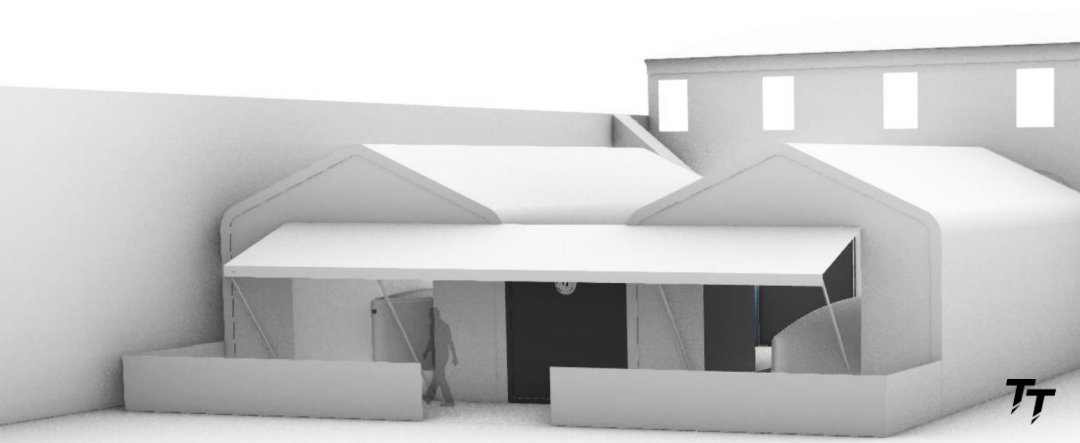
L'ETE is in this culture that marries both the excitement for life and the taste for the finer things.



## **MODERN BUILD FACILITIES**

Modern facilities in an exceptional environment. We provide:

- The possibility to benefit from a **long-term berth** in the marina of Villefranche-sur-mer
- **Advanced familiarization** with the boat including maneuvers at sea and in the marina for a confident use of the boat
- Assistance services for **races**
- Recommendations for best anchorages, hotels and restaurants minutes away





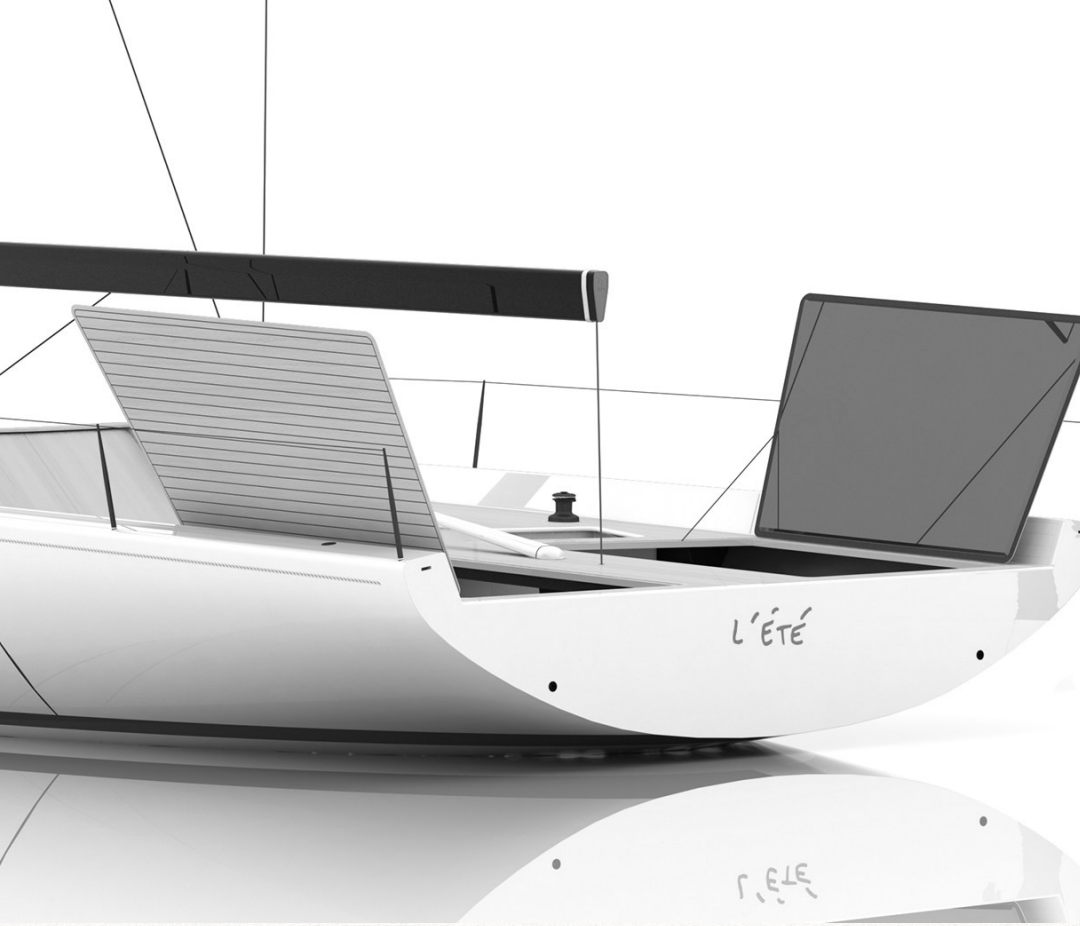


# ***BUILT FOR THOSE WHO REFUSE TO RELAX THEIR STANDARDS***

Yacht designers, engineers and naval architects, the team is made of **expert contributors** from the world of the **America's Cup** dedicated to the design of the most advanced yachts and vessels.

Based, near Monaco, we design and build our own timeless yachts offering owners a direct, bespoke experience.

**LEARN MORE ABOUT US**  
**ON OUR WEBSITE**





Thomas Tison Manufacturing Company SARL  
Port Royal de la Darse  
1er Etage de la Maison Cantonnière  
06230 Villefranche-sur-mer  
FRANCE

+33 (0)783 558 797  
[info@thomastison.com](mailto:info@thomastison.com)  
[www.thomastison.com](http://www.thomastison.com)