

APH ToD: **457.2** CDL: **11.198**

APH ToT: **1.3123** CertNo: **74113a**

BOAT

Class **ETE**
Designer **Thomas TISON**
Builder
Age date
Series date **01/2025**
Offset file **ETE-DV.off**
Data file **74113a**

HULL

Length Overall **11.995 m**
Maximum Beam **4.048 m**
Draft **2.623 m**
Displacement **3 700 kg**
DLR **3.4169**
IMS Division **Cruiser/Racer**
Dynamic Allowance **0.000%**
Age Allowance **0.000%**

PROPELLER

Installation **Strut**
Type **Folding 2 blades**
Diameter **0.425m**

CREW

Maximum weight **715 kg (default)**
Minimum weight **585 kg * when applied**
Non Manual Power **No**
Crew Arm Extension

SAIL AREAS (m²)

	Measured	Rated
Mainsail	54.04	55.06
Headsail Luffed	44.62	44.62
Headsail Flying		
Symmetric		
Asymmetric	167.08	167.08

(All asymmetric spinnakers with SHW/SFL > 85%)

STORM SAIL AREAS (m²)

Trysail **14.74**
Storm Jib **12.73**
Heavy Weather Jib **34.36**

SAIL LIMITS

Headsails **6**
Spinnakers **5**

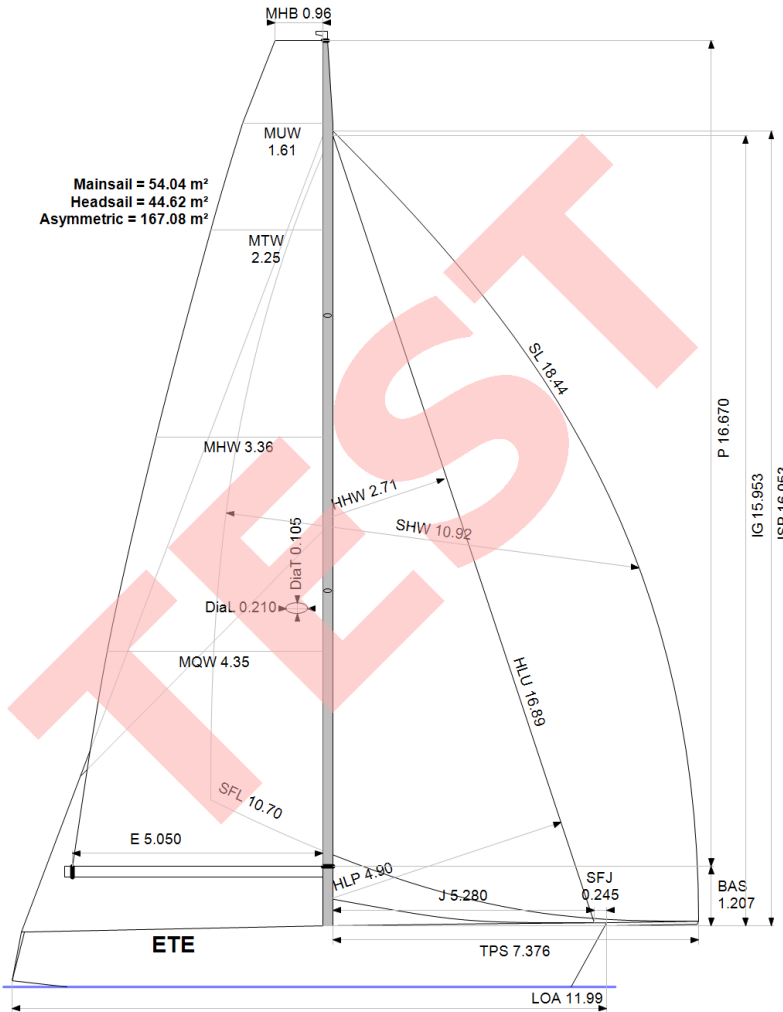
STABILITY

Righting Moment **N/A**
Stability Index **N/A**

COMMENTS

Wood hull / DSPL=3700kg /

The owner and any other person in charge is responsible that boat is complying with her certificate in accordance with RRS 78.1 and ORC Rule 304.



Rated boat velocities in knots

Wind Velocity	6 kt	8 kt	10 kt	12 kt	14 kt	16 kt	20 kt	24 kt
Beat Angles	42.1°	39.7°	39.1°	38.7°	38.4°	38.4°	39.0°	40.9°
Beat VMG	4.56	5.27	5.58	5.76	5.86	5.93	5.94	5.77
52°	6.88	7.71	8.03	8.23	8.38	8.49	8.60	8.51
60°	7.21	7.99	8.34	8.58	8.77	8.91	9.07	9.04
75°	7.44	8.22	8.76	9.11	9.39	9.61	9.90	10.02
90°	7.35	8.18	8.86	9.45	9.92	10.31	10.90	11.31
110°	7.09	8.19	8.89	9.40	9.88	10.44	11.84	12.97
120°	6.93	8.15	9.05	9.77	10.38	10.99	12.16	13.29
135°	6.21	7.72	8.64	9.61	10.72	11.90	13.72	15.71
150°	5.19	6.57	7.66	8.56	9.41	10.48	13.29	17.05
Run VMG	4.50	5.69	6.63	7.42	8.15	9.07	11.51	14.76
Gybe Angles	142.0°	145.1°	148.5°	151.0°	148.5°	146.2°	145.3°	149.4°

Time Allowances in secs/NM								
Wind Velocity	6 kt	8 kt	10 kt	12 kt	14 kt	16 kt	20 kt	24 kt
Beat VMG	789.3	683.1	645.0	625.5	614.4	607.4	606.3	624.1
52°	523.5	467.2	448.4	437.3	429.7	424.2	418.8	422.9
60°	499.1	450.8	431.7	419.4	410.4	404.0	397.1	398.1
75°	483.9	438.0	411.1	395.0	383.6	374.6	363.6	359.2
90°	490.0	440.1	406.5	381.1	362.9	349.2	330.2	318.2
110°	507.7	439.5	405.1	382.9	364.2	344.8	304.0	277.6
120°	519.7	441.5	397.9	368.4	346.7	327.5	296.1	271.0
135°	580.0	466.5	416.7	374.7	335.8	302.6	262.4	229.1
150°	693.0	548.4	470.0	420.4	382.4	343.5	270.8	211.2
Run VMG	800.2	633.2	542.7	485.0	441.6	396.7	312.7	243.8
Selected Courses								
Windward / Leeward	794.7	658.1	593.9	555.2	528.0	502.0	459.5	433.9
All purpose	612.2	520.0	476.0	447.8	426.7	407.8	378.5	361.2

Single Number Scoring Options		
Course	Time On Distance	Time On Time
Windward / Leeward	569.7	1.0532
All purpose	457.2	1.3123

Custom scoring options for France

Scoring Option	Time On Distance	Time On Time
Triple Number Coastal/Long Distance Low	566.1	1.0598
Triple Number Coastal/Long Distance Medium	458.0	1.3101
Triple Number Coastal/Long Distance High	401.5	1.4943
Triple Number Windward/Leeward Low	726.5	0.8259
Triple Number Windward/Leeward Medium	569.9	1.0529
Triple Number Windward/Leeward High	492.6	1.2181

Data in meters/kilograms (Metric)

HULL AND APPENDAGES (Lightship Trim)

Class	ETE	LOA	11.995	VCGD	-0.280
Measurement		Max. Beam	4.048	VCGM	-0.282
HIN		Draft	2.623	RM Rated (kg·m)	118.2
Plan review		Displacement	3 700	Limit of positive stability(°)	N/A
Hull construction	Cored	Wetted area	24.13	Stability Index	N/A
Carbon Rudder	Yes	IMS L	10.998	Default crew weight	715
Light stanchions	No	LSM0	10.268	Declared crew weight	N/A
Trim tab	No	Acc. length	11.995		
		Sink (kg/mm)	19.05		

PROPELLER

Propeller Type	Folding 2 blades				
Installation	Strut	PRD	0.425	EDL	1.785
Twin screw	No	PBW		ST1	0.051
Hydro generator	No	PIPA	0.0036	ST2	0.170
				ST3	0.200
				ST4	0.115
				ST5	0.260

RIG

Forestay tension	Aft	P	16.670	E	5.050
Inner stay	None Fitted	IG	15.953	J	5.280
Mast material	Carbon	ISP	16.053	BAS	1.207
Single headsail furler	No	MDT1	0.105	FSD	
Mainsail furler		MDL1	0.210	SFJ	0.245
Articulated bowsprit	No	MDT2	0.510	SPL	
Non-circular rigging	No	MDL2	0.102	WPL	
Fiber rigging	No	TL	1.700	TPS	7.376
Adjustable mast foot	No	MW		BD	0.225
Runners/Checkstays	2	GO		MWT	168.00
Spreaders	2			MCG	7.800
Rotating mast	No				

FLOTATION AND STABILITY

Calculation method	VCG entered directly
VCG entered	-0.280
Flotation Date	01/01/2013

MAINSAIL

<i>Id</i>	<i>MHB</i>	<i>MUW</i>	<i>MTW</i>	<i>MHW</i>	<i>MQW</i>	<i>Area</i>	<i>Meas.Date</i>	<i>Comment</i>
M0	0.96	1.61	2.25	3.36	4.35	54.04	06/11/2024	Standard

HEADSAIL

<i>Id</i>	<i>HHB</i>	<i>HUW</i>	<i>HTW</i>	<i>HHW</i>	<i>HQW</i>	<i>HLP</i>	<i>HLU</i>	<i>Btn</i>	<i>Flying FT</i>	<i>Area</i>	<i>Meas.Date</i>	<i>Comment</i>
J0	0.15	0.86	1.50	2.71	3.90	4.90	16.89	Yes	No	44.62	06/11/2024	Standard

ASYMMETRIC SPINNAKER

<i>Id</i>	<i>SLU</i>	<i>SLE</i>	<i>SL</i>	<i>SHW</i>	<i>SFL</i>	<i>Ratio</i>	<i>Area</i>	<i>Meas.Date</i>	<i>Comment</i>
A0	20.48	16.39	18.44	10.92	10.70	102%	167.08	06/11/2024	Standard

CRUISER/RACER REQUIREMENTS*

Accommodation length	12.0 m	Table area	0.55 m²	Headroom	1.81 m
Minimum number of berths	5	Personal gear stowage	0.20 m³	Fresh water capacity	150 l
Minimum number of seats in cockpit	5	Food stowage	0.30 m³	Fuel capacity	90 l

* This list refers to the calculated requirements. See IMS Appendix 1 for the complete list of requirements.